

Service Manual

Cordless Cut-out trimmer

EY3570

<Specifications>

CUT-OUT TRIMMER

Motor voltage : 12V DC
 Rotational speed : 13,000/min
 Straight bit : $\phi 15/64$ " x 1-31/32", $\phi 6$ x 50mm
 Circle-cutting adaptor.: Range of circle diameters;
 3-5/32" - 7-7/8", 80-200mm
 Overall length : 11-1/4", 286mm
 Weight : 3.1 lbs., 1.4kg
 (with battery pack)

BATTERY PACK

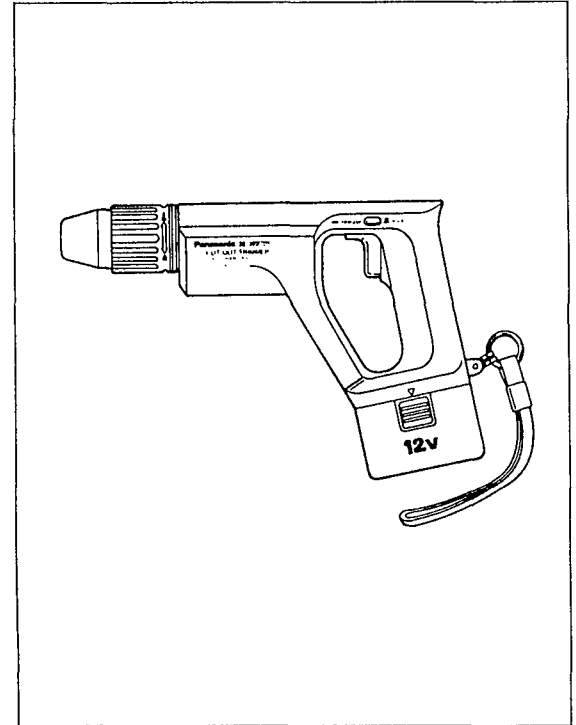
Storage battery : Ni-Cd battery
 Battery voltage : 12V DC (1.2V x 10 cells)

BATTERY CHARGER

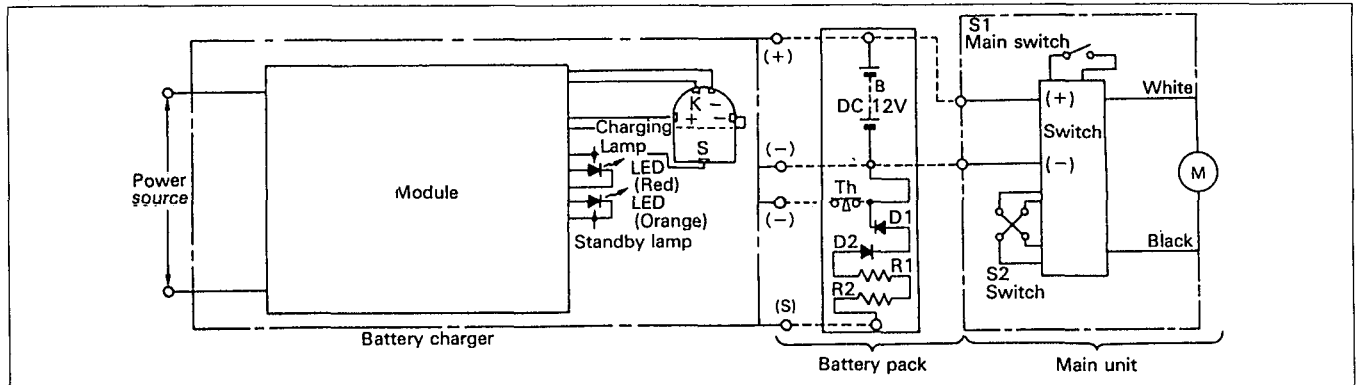
Input : 120, 220, 230, 240V AC separately available
 Weight : 1.45 lbs., 0.66kg
 Charging time : Standard 15 minutes

<Standard equipment>

Battery charger
 Battery pack
 Straight bit
 Circle-cutting adaptor
 Wrench (10mm)
 Wrench (17mm)
 Tool case



SCHEMATIC DIAGRAM



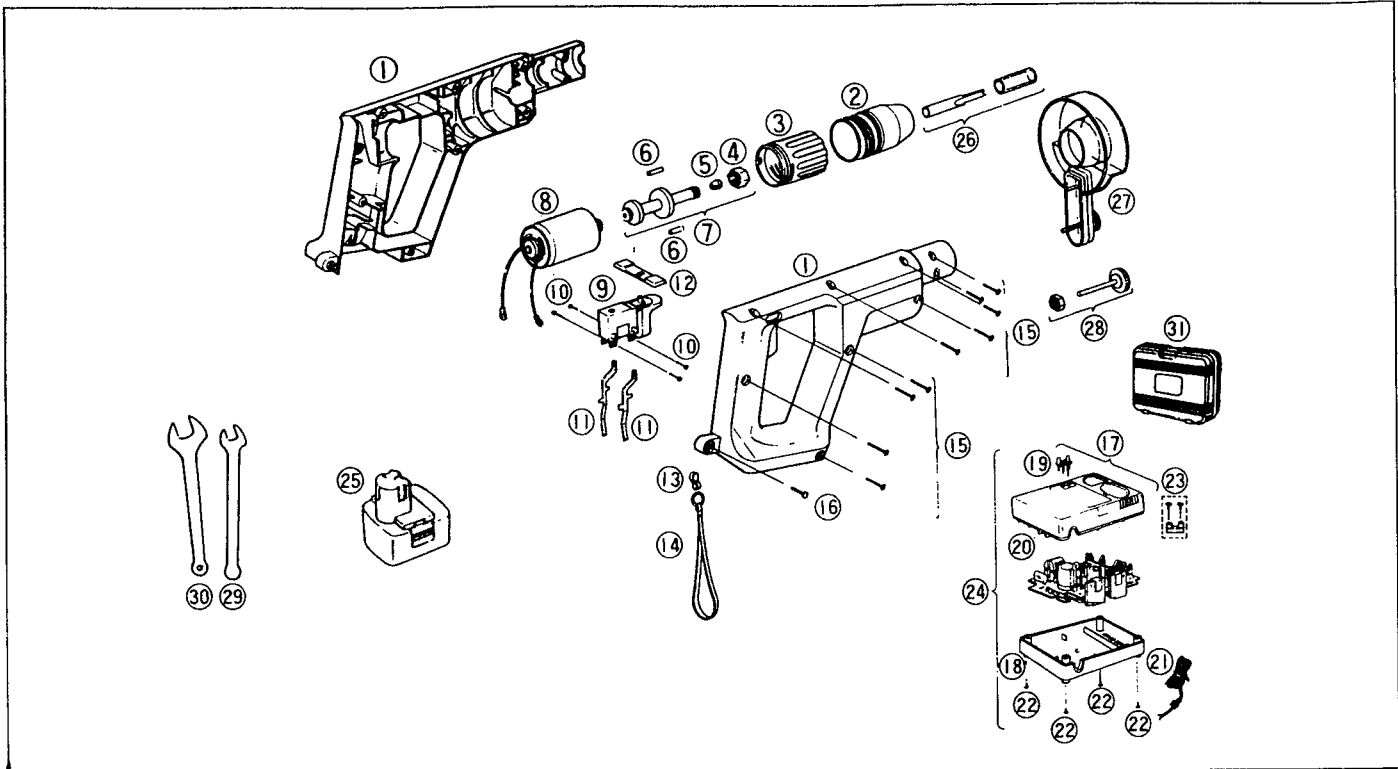
⚠ WARNING

This service literature is designed for experienced repair technicians only and is not designed for use by the general public. It does not contain warnings or cautions to advise non-technical individuals of potential dangers in attempting to service a product. Products powered by electricity should be serviced or repaired only by experienced professional technicians. Any attempt to service or repair the product or products dealt with in this service information by anyone else could result in serious injury or death.

Panasonic

© 1995 Matsushita Electric Works, Ltd.
 All rights reserved. Unauthorized copying and distribution is a violation of law.

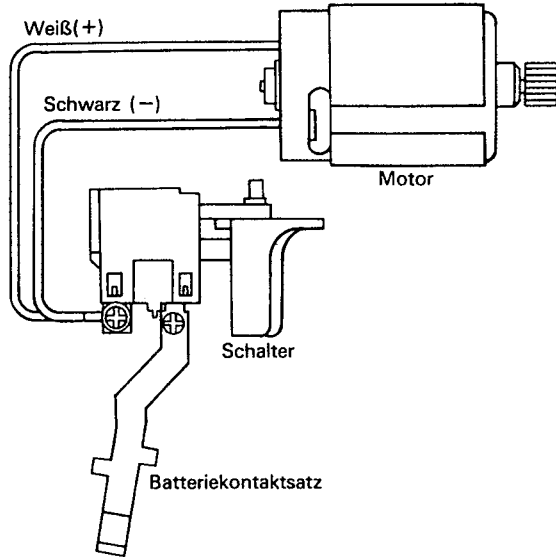
EXPLODED VIEW



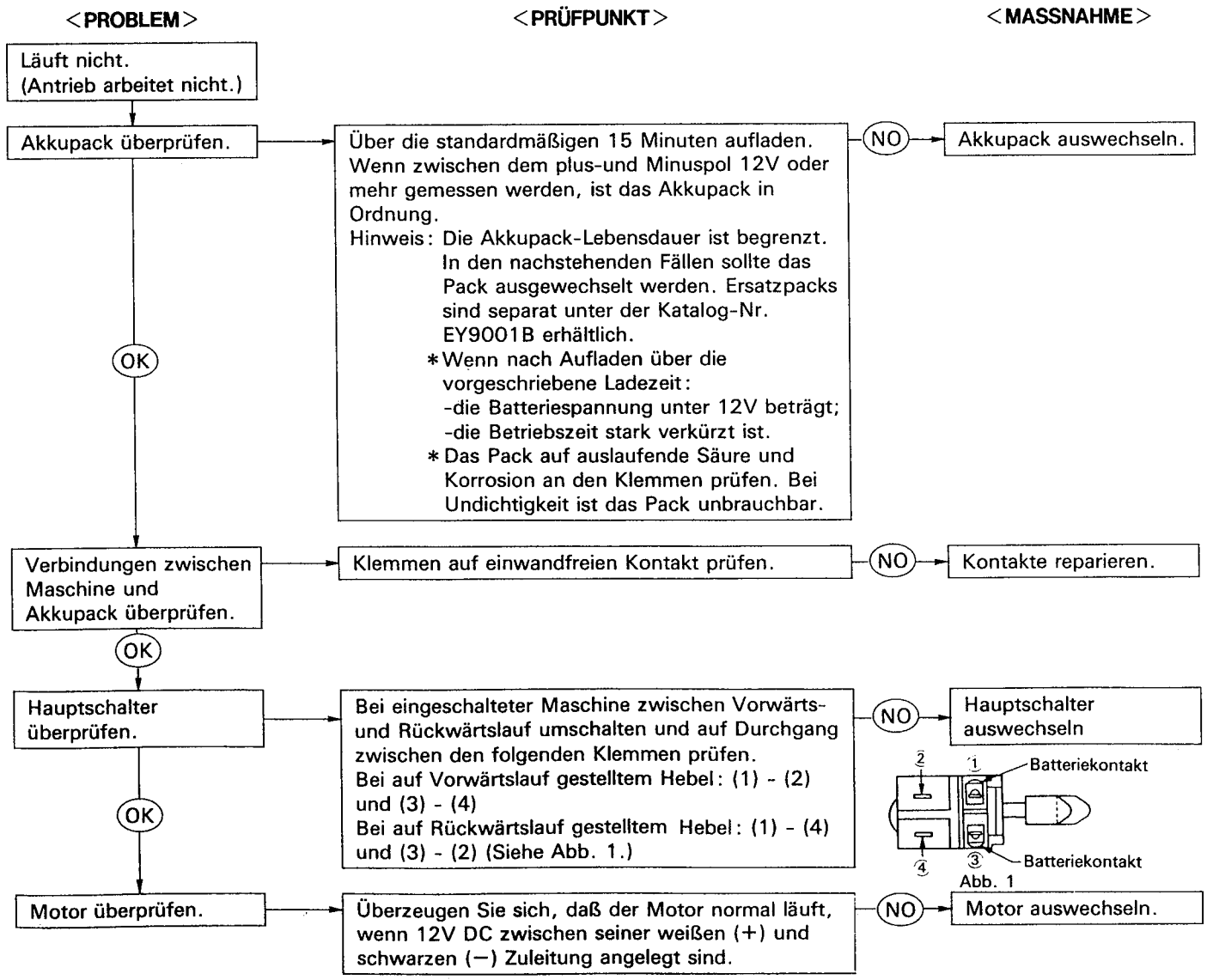
REPLACEMENT PARTS LIST

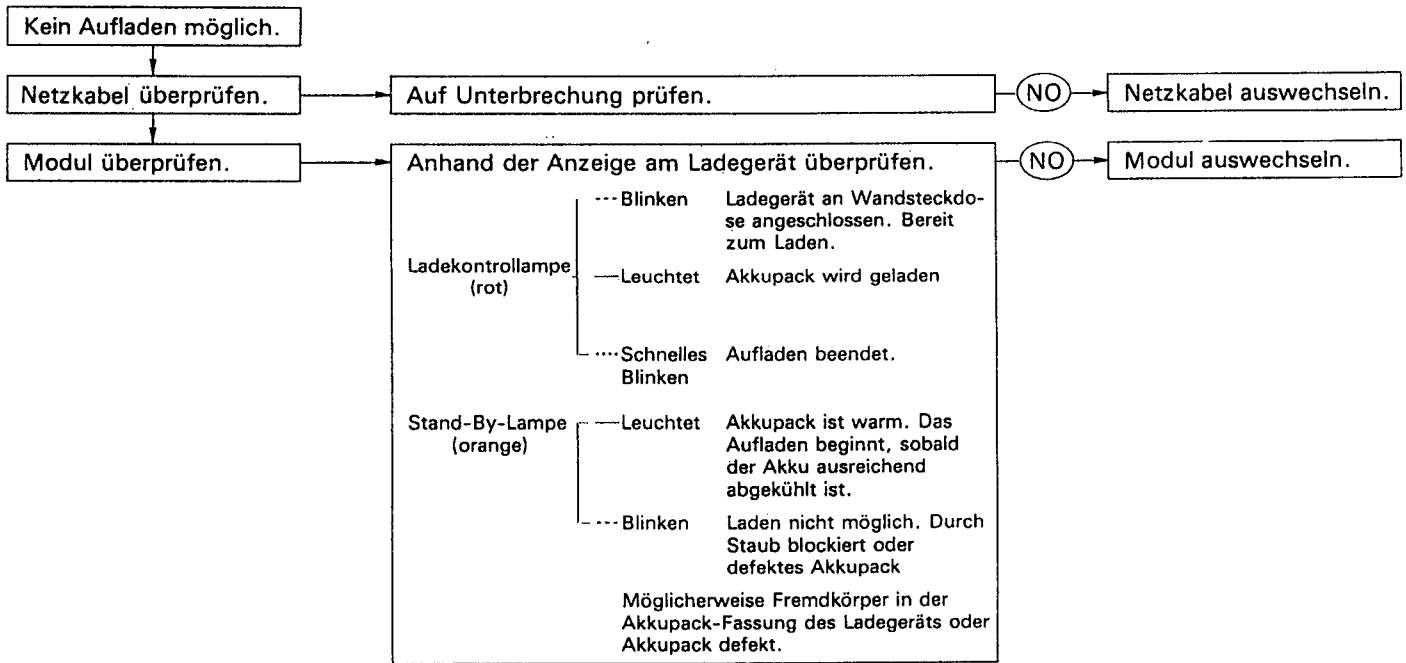
| Ref. No. | Part No. | Part Name & Descriptions | Per Set | Remarks |
|----------|--------------|--------------------------------------|---------|------------------------|
| 1 | WEY3570B3078 | Housing AB set | 1 | Only available as set |
| 2 | WEY3570C7208 | Depth adjuster | 1 | |
| 3 | WEY3570H3238 | Adjusting ring | 1 | |
| 4 | WEY3570B0897 | Collet nut | 1 | |
| 5 | WEY3570B0837 | Collet chuck | 1 | |
| 6 | WEY3570B0987 | Bushing | 2 | Only available as set |
| 7 | WEY3570B1127 | Output shaft block | 1 | |
| 8 | WEY3570B1007 | Motor | 1 | |
| 9 | WEY3570Y2008 | Switch | 1 | |
| 10 | WEY531B6197 | Screw | 4 | Available individually |
| 11 | WEY6700B0067 | Battery terminal set | 1 | Only available as set |
| 12 | WEY3570Y3248 | Forward/Reverse selector handle | 1 | |
| 13 | WEY505B0287 | Hand strap ring | 1 | |
| 14 | WEY506B0277 | Hand strap | 1 | |
| 15 | WEY3570B9068 | Tapping screw | 9 | Available individually |
| 16 | WEY561S9037 | Tapping screw | 1 | |
| 17 | WEY0202B3099 | Housing A for charger | 1 | |
| 18 | WEY0202B3033 | Housing B for charger | 1 | |
| 19 | WEY0200C0547 | Lamp cover | 1 | |
| 20 | WEY0202B2129 | Module | 1 | |
| 21 | WEY0001B2058 | Power cord | 1 | |
| 22 | WEY0001B6237 | Screw | 4 | Available individually |
| 23 | WEY562B0218 | Cord ancore set | 1 | Only available as set |
| 24 | WEY0202B7659 | Battery charger | 1 | |
| 25 | EY9001 | Battery pack | 1 | Commercial available |
| 26 | WEY3570B7998 | Straight bit | 1 | |
| 27 | WEY3570C7708 | Circle-cutting adaptor <i>521769</i> | 1 | |
| 28 | WEY3570B6317 | Circle-cutting screw set | 1 | Only available as set |
| 29 | WEY3570S7867 | Wrench | 1 | |
| 30 | WEY3570S7877 | Wrench | 1 | |
| 31 | WEY3570H7018 | Tool case | 1 | |
| - | WEY3570B8008 | Individual box | 1 | |
| - | WEY3570B8108 | Operating instructions | 1 | |

VERDRAHTUNGSSCHEMA



PRÜFMETHODE





HINWEISE ZUM ZERLEGEN UND ZUSAMMENBAUEN

(Siehe Abb. 2.)

Beim Zerlegen lösen sich zusammen mit der Antriebseinheit auch die darunter befindlichen Hülsen (vibrationsdämpfender Gummi). Diese Hülsen (4 Stck.) nicht verlieren und beim erneuten Zusammenbauen nicht vergessen, die Hülsen wieder einzusetzen.

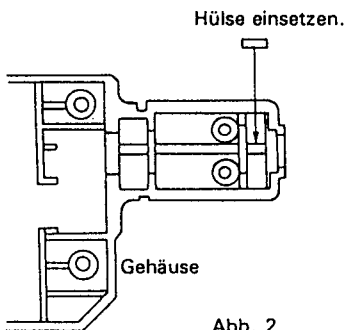


Abb. 2