

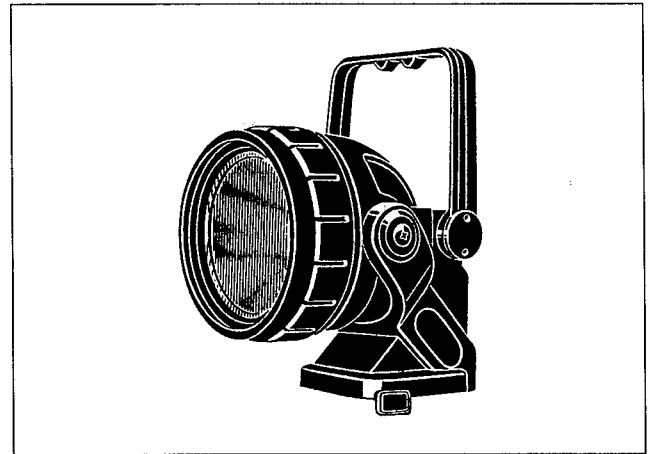
Service Manual

Lantern

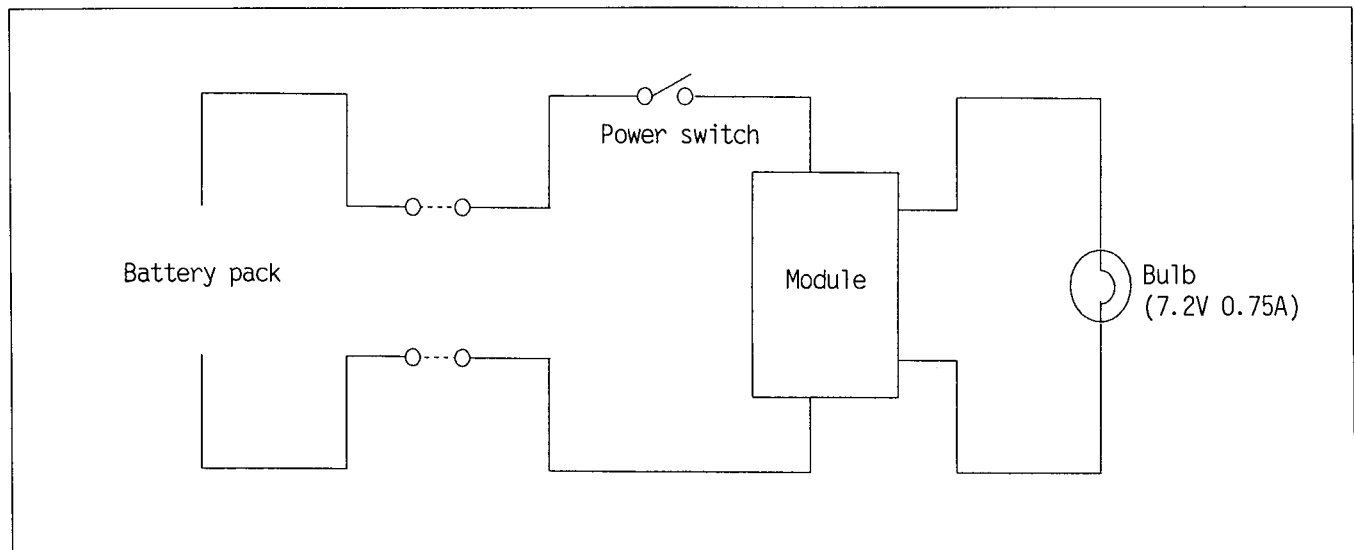
EY3790

<Specifications>

Bulb	: Xenon bulb (7.2V, 0.75A)
Brightness	: Approx. 5000lux
Dimensions	: 155(D) × max. 205(H) × 143(W)mm (excluding the battery pack)
Weight	: Approx. 0.4kg (excluding the battery pack)



SCHEMATIC DIAGRAM



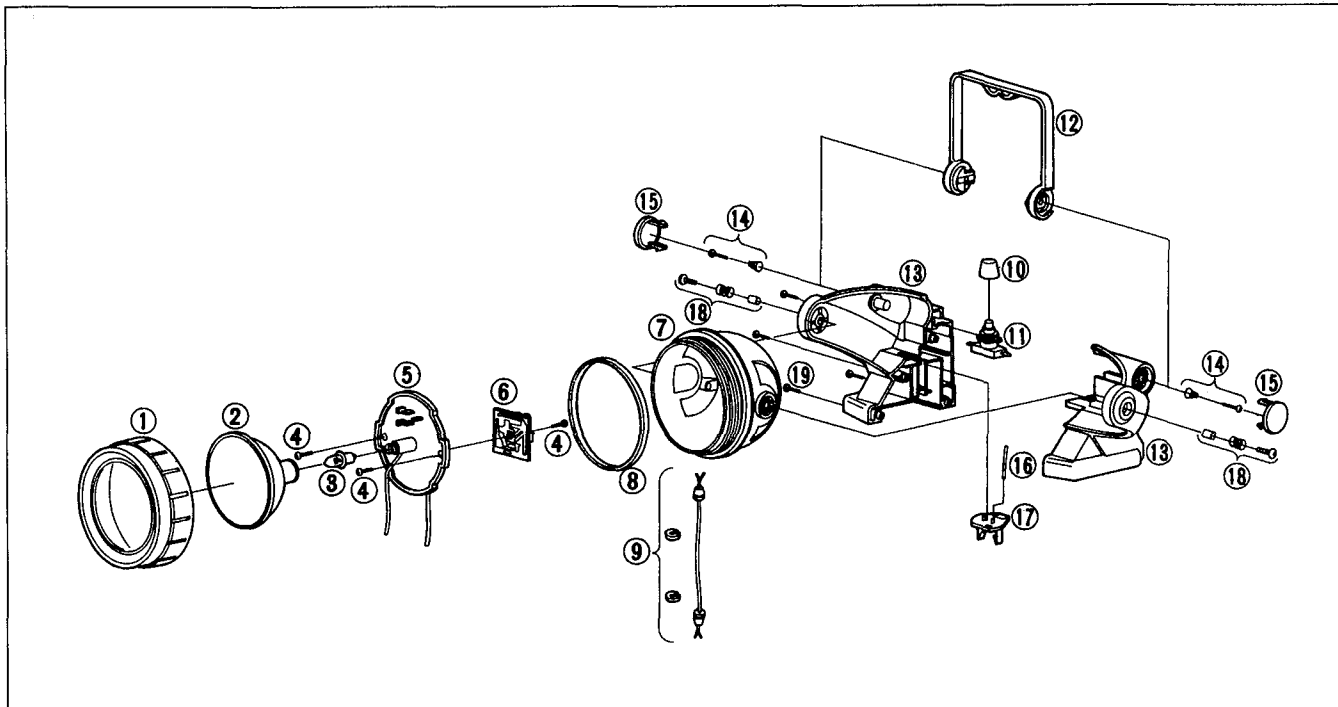
⚠ WARNING

This service literature is designed for experienced repair technicians only and is not designed for use by the general public. It does not contain warnings or cautions to advise non-technical individuals of potential dangers in attempting to service a product. Products powered by electricity should be serviced or repaired only by experienced professional technicians. Any attempt to service or repair the product or products dealt with in this service information by anyone else could result in serious injury or death.

Panasonic

© 1994 Matsushita Electric Works, Ltd.
All rights reserved. Unauthorized copying and distribution is a violation of law.

EXPLODED VIEW



REPLACEMENT PARTS LIST

Ref. No.	Part No.	Part Name & Descriptions	Per set	Remarks
1	WEY3790K0547	SHADE	1	
2	WEY3790S3757	REFLECTOR	1	
3	WEYMB-72P75X	BULB	2	
4	WEY6261B9057	TAPPING SCREW (K3-10)	3	
5	WEY3790L2587	LAMP HOLDER BASE	1	
6	WEY3790L2107	MODULE	1	
7	WEY3790K3057	LAMP CASE	1	
8	WEY3790K0797	O-RING	1	
9	WEY3790L2897	JUNCTION CORD	1	
10	WEY3790K3257	SWITCH CAP	1	
11	WEY3790L2007	POWER SWITCH	1	
12	WEY3790K3247	HANDLE	1	
13	WEY3790K3077	HOUSING AB SET	1	
14	WEY3790L0167	SPRING/SCREW SET	2	
15	WEY3790K3447	SCREW CAP	2	
16	WEY3790L2967	LEAD WIRE (RED)	1	
17	WEY3790L2157	TERMINAL PLATE	1	
18	WEY3790K0177	SPRING/COLLAR/SCREW SET	2	
19	WEY3790K9037	TAILING SCREW (K3-20)	4	
—	WEY3790K8008	INDIVIDUAL BOX	1	
—	WEY3790K8108	INSTRUCTION MANUAL	1	